

Retinal analysis and 3D imaging

Retinal imaging capabilities include retina mapping with normative comparison and a 3D retina scan with en face presentation, which enables virtual retinal dissection by displaying three different reference planes: ILM, IPL and RPE.

In-depth 3D optic disc analysis

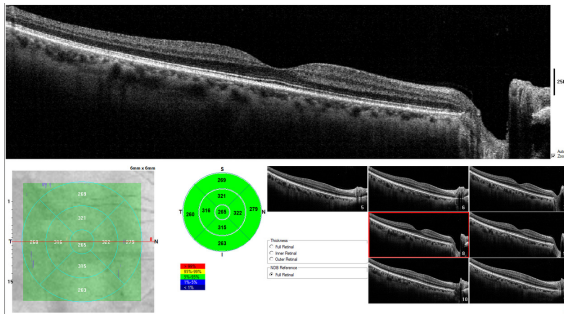
GCC analysis helps identify ganglion cell loss, which sometimes precedes RNFL loss. 3D disc scan depicts the optic nerve in cross section with the representative thicknesses of selected slices.

Additional capabilities

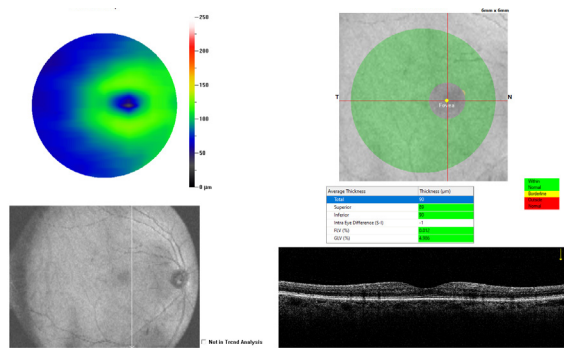
All iScan80 systems feature Optovue's exclusive WellnessExam. iScan80 Comprehensive includes Cornea Advance anterior segment imaging features such as pachymetry mapping and a variety of corneal and angle measurement tools.

iScan80 Essential

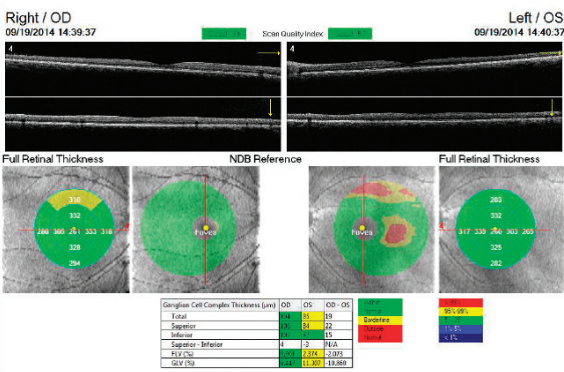
Retina Mapping



GCC Single Eye

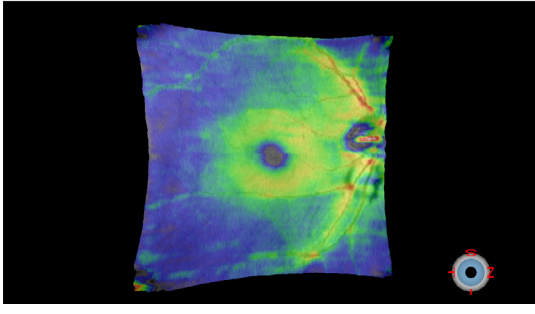


WellnessExam

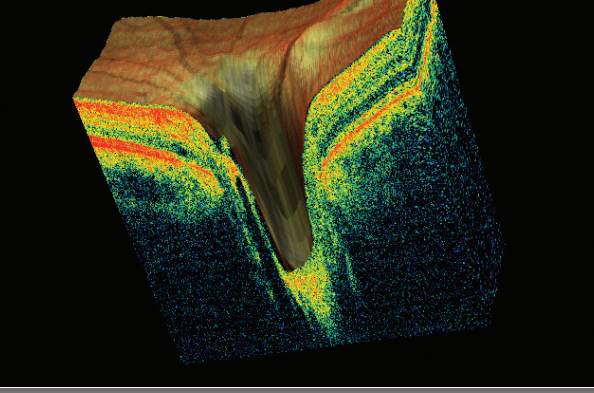


iScan80 Comprehensive

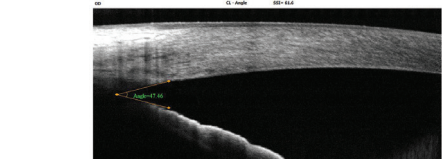
3D Retina



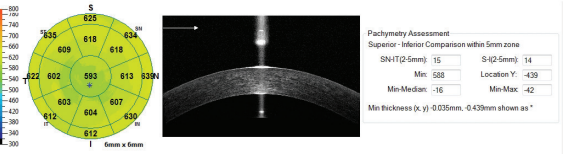
3D Optic Disc Scan



Anterior Segment Angle with Measurement



Pachymetry Map



iScan80 specifications

Scanner

OCT Image	80,000 A-scan/second
Depth Resolution (in tissue)	5.0 µm
Transverse Resolution	15 µm (retina)

Scan Range

Depth	2 - 2.3mm (retina)
Scan Beam Wavelength	840nm (+/-10nm)

OCT Fundus Image (En Face)

FOV	(H) 21° x (V) 21°
Minimum Pupil Diameter	2.0mm
External Image (Live IR) FOV	13mm x 8mm

Size

Dimensions (in.)	(W) 19.81 x (L) 15.83 x (H) 17.82
Weight (lb.)	42.94

Our vision is foresight

Since 2006, Optovue has been a leading provider of OCT technology for ocular diagnostic imaging, having installed more than 15,000 systems on six continents. We remain the only company in the world solely focused on furthering the science, efficacy and clinical application of OCT for enhanced eye health. Not surprisingly, this specialization has yielded a history of OCT patents and firsts.

Our mission is your success

To unleash the full potential of OCT in your practice, Optovue puts its world-class OCT resource center at your disposal:

- *The Academy at Optovue* brings OCT education to your computer and mobile screens to help you interpret images, understand reports, apply the information to clinical practice—or help your staff become better OCT operators.
- *Best-In-Class Training and Support* starts with professional installation and in-office staff training from your dedicated Optovue clinical applications specialist and goes on to include five years of free phone and online support.
- *Free Software Updates* that improve system usability and efficiency throughout your instrument's operational lifetime are included with every iScan80 system. Major software upgrades may be available for purchase.

Bottom line, when you invest in iScan80, you also secure a valuable OCT practice partner.

Put Optovue foresight to work in your practice today

For a complimentary practice consultation or iSeries system demonstration call 1.510.623.8868 or visit optovue.com.



Our vision is foresight

2800 Bayview Drive, Fremont, CA 94538 optovue.com

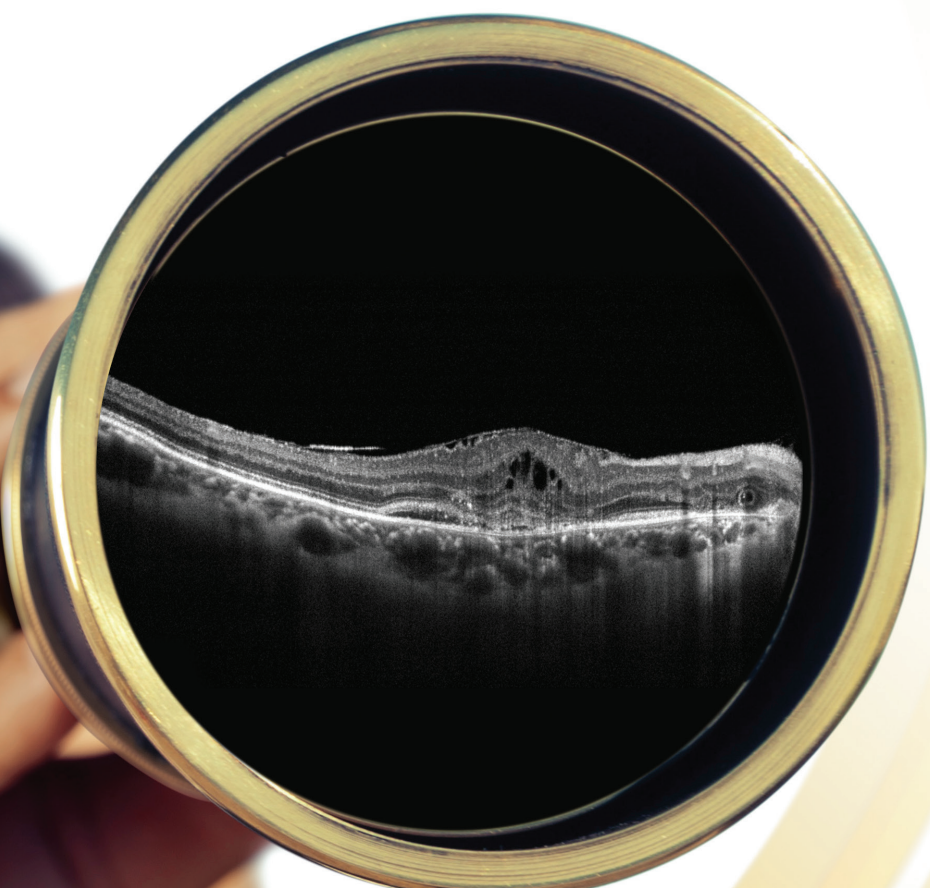
© 2021 Optovue, Inc. iScan80, GCC and WellnessExam are registered trademarks of Optovue, Inc. All rights reserved.

1. Data on file.

300-52534 Rev. B



Our vision is foresight



iScan[®]80
OCT System

iScan80® OCT

The OCT that practically runs itself

Introducing the next-generation iScan—where advanced scanning is realized in a system so user-friendly it even talks to patients. Meet **iScan80®**, the high-speed 80kHz OCT that sets the standard for efficiency—perfect for ECPs seeking an affordable OCT entrée. It's ideal for practices with limited staff since **iScan80** delivers consistent scan acquisition with minimal training—and vocally guides patients through an entire exam in any of 12 languages. The new iScan80 delivers the following advancements:

- 80,000 A-scans per second – 3x faster than the original iScan OCT
 - Simplified scan acquisition
- New reports and wider field of view

Compact and portable, **iScan80's** streamlined design integrates the operator interface, display, patient interface and scan head into one console that can be moved from station to station and mounted on any tabletop. Then comes the easy part—plug in, switch on and start scanning.

From Essential to Comprehensive

iScan80 is available in two configurations: Essential and Comprehensive. **iScan80 Essential** can be upgraded to **iScan80 Comprehensive** at any time to enable more advanced diagnostic imaging.

iScan80 Essential capabilities

- **WellnessExam**
- Retina mapping
- RFNL and GCC® trend analyses
- FLV% and GLV% analysis to increase GCC sensitivity and specificity

iScan80 Comprehensive capabilities

iScan80 Comprehensive includes all iScan80 Essential capabilities plus:

- High-density 3D retinal imaging
- In-depth 3D optic nerve head analysis
- Cornea Advance anterior segment imaging and measurement

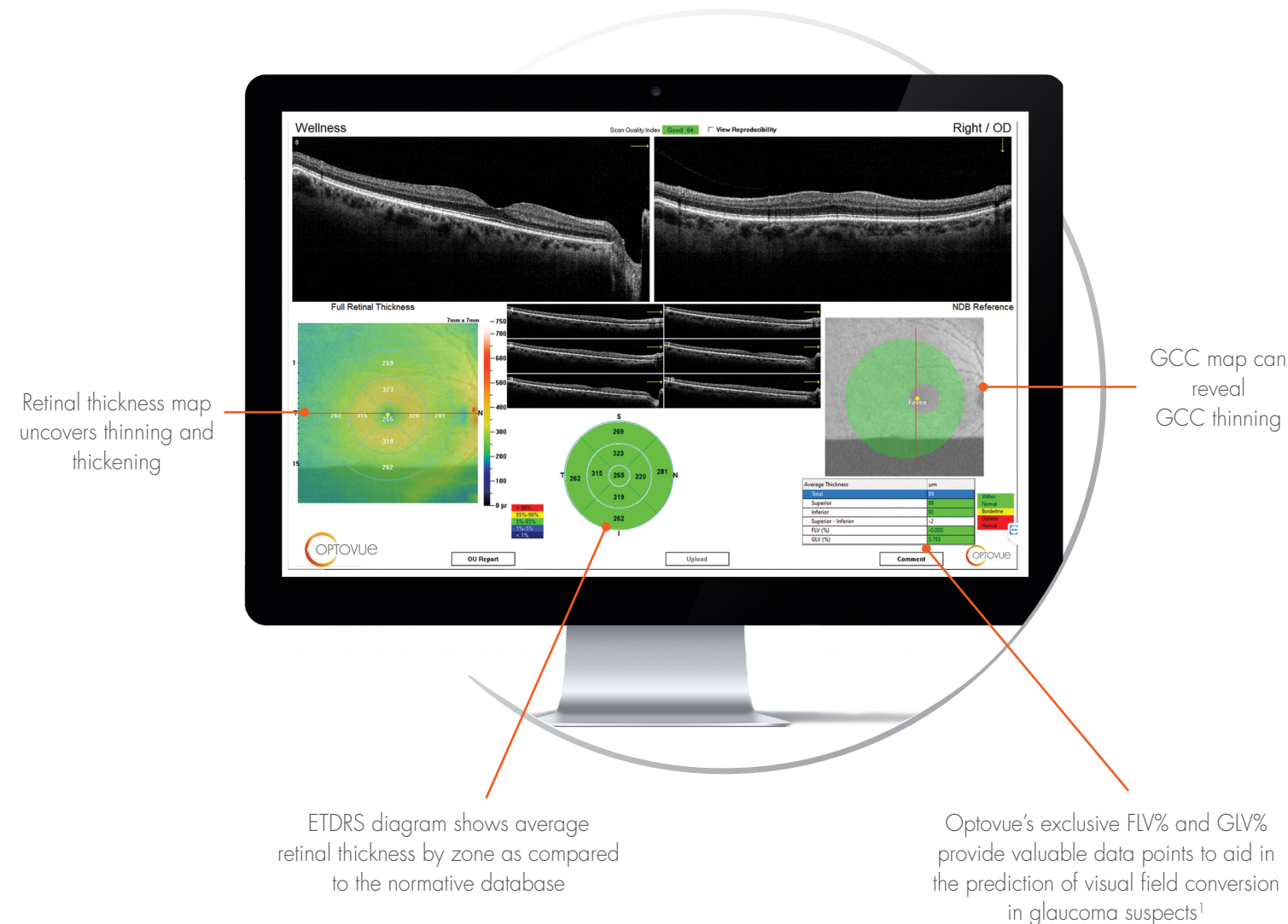


WellnessExam®

A clear path to patient eye health

The **WellnessExam®** is an Optovue exclusive that delivers a quick, easy OCT scan to promote better overall patient eye health. Its usefulness stems from a single, comprehensive report that depicts:

- Retinal thickness and GCC thickness with normative comparison
- Symmetry analysis
- FLV% and GLV%, proprietary Optovue GCC metrics that provide important information to aid in ocular disease diagnosis and management
- Eight high-resolution B-scans



WellnessExam benefits patients

Ultimately **Wellness** benefits patients by helping them become more involved in their own eye health. The scanning process is simple and quick, and each patient receives comprehensive, personalized eye health information in an easy-to-understand report.

WellnessExam benefits eye care providers

Wellness benefits ECPs by providing a valuable assessment tool that can reveal the need for more extensive imaging. It also streamlines the exam process by quickly confirming normal—or helping you more efficiently diagnose pathology. Optovue's current **WellnessExam** users have affirmed that the **WellnessExam** improves patient involvement, loyalty and retention. This helps you grow and differentiate your eye care practice, while also providing a new revenue stream.

Networking solutions

iScan80 provides comprehensive networking capabilities for the most effective and efficient OCT utilization. It stems from our NetVue product suite, which empowers you to receive, review and modify images wherever and whenever you choose. Capture new patient scans while existing scans are being reviewed. View and modify images from as many as 10 review stations. Access OCT images from your smart phone, tablet, laptop or desktop. NetVue makes such seamless workflow possible. Naturally iScan80 is fully DICOM compatible.

Review station requirements

Operating System:	Win 10, 64 bit
Processor Speed:	Intel® Celeron (i7-8700T 2.40 GHz)
Computer RAM:	16 GB or higher
Network Bandwidth:	1Gbps or higher
Monitor Resolution:	24 in.1920x1080 60Hz