


centerVUE



drs<sub>plus</sub>

**Innovating a Higher Standard** in Retinal Imaging



Focus. Quality.  
Comfort.

DRSplus **confocal fundus imaging system** by CENTERVUE uses white LED illumination to produce TrueColor and detail-rich images, setting a new effective and efficient standard of **retinal imaging**.



**TrueColor Confocal Technology**, with white LED, promotes **detailed 45° retinal images** and allows to **scan through cataract**.

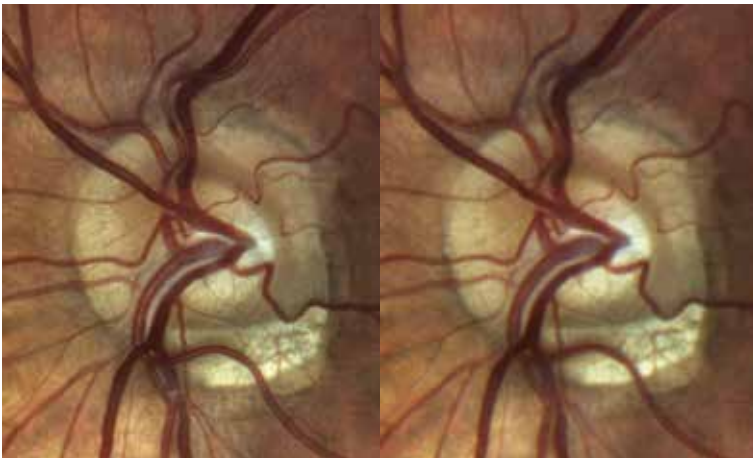


The confocal technology permits imaging through **pupils as small as 2.5 mm**, without need of dilation, ensuring a comfortable patient experience.



**Fast Fully Automated** operation requires minimal staff training to acquire the highest quality images, speeding up the examination time.





Stereo pair

### **Stereo Viewer** Technology.

DRSplus Stereo Viewer Technology (optional) automatically captures two separate photos of the nasal field, at different angles and different focal planes (bifocal), creating improved 3D perception of the disc.



External Eye

### **External Eye** Photography.

External Eye imaging allows for documentation of eye surface and cornea conditions.

### DRSplus **Remote Viewer**.

The DRSplus Remote Viewer (optional) is a browser-based software license that allows for reviewing from any network computer on the same local area network (LAN), with user login and password protection.

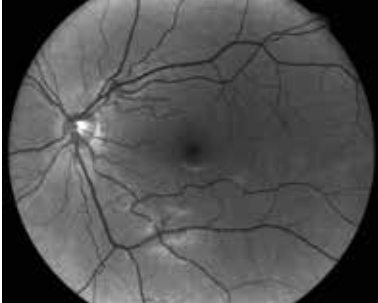


### Provide your patient with a **comfortable exam experience**.

DRSplus is designed to optimize patient comfort during the exam, allowing for the improvement of workflow and clinic efficiency.

CENTERVUE DRSpplus **provides different imaging modalities.**

TrueColor, Red-free, Blue and Red channels, External Eye, Stereo view of the ONH and Mosaic.



Red-free



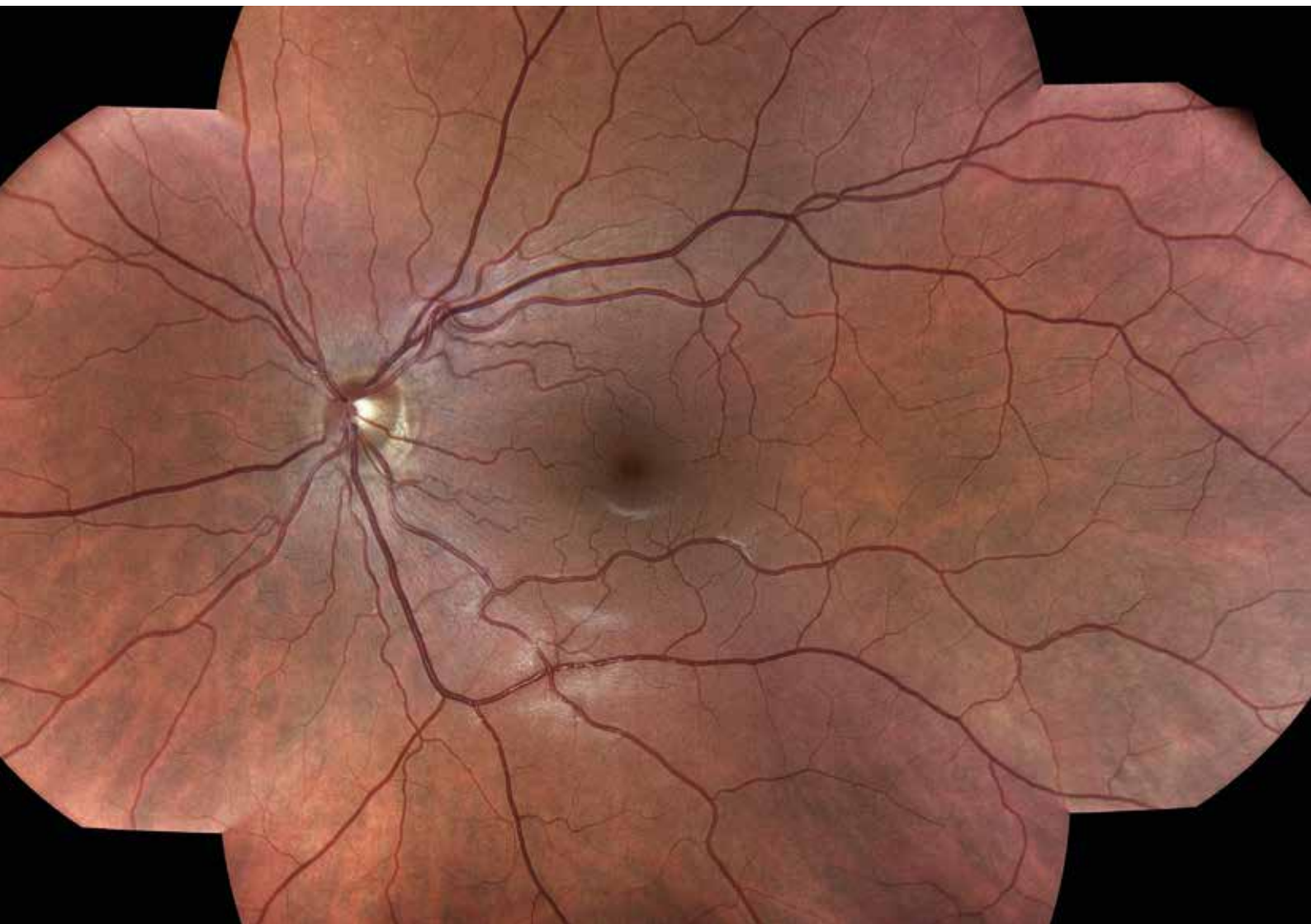
Blue



Red

The Mosaic function allows a **panoramic view of the retina, up to 80°**.

By using a special stitching algorithm, DRSpplus automatically combines different fields without user intervention.



# Technical specifications

---

## Fundus Imaging System Features

---

<b>Field of View</b>	Single image (W x H): 45° x 40° Mosaic up to 9 fields (W x H): 83° x 78°
<b>Light Sources</b>	White LED: 440-650 nm Infrared LED: 825-870 nm
<b>Imaging Modalities</b>	TrueColor, Red-Free*, Blue*, Red*, External Eye, Stereo**, Mosaic**
<b>Autofocus Adjustment Range</b>	-15D to +15 D
<b>Automatic Operations</b>	Auto-alignment, Auto-focus, Auto-exposure, Auto-capture, Auto-montage
<b>Minimum Pupil Size</b>	Non-myd 2.5 mm
<b>Working Distance</b>	25 mm
<b>Image Size</b>	10 Megapixels
<b>Resolution</b>	80 pixel/degree
<b>Fixation Targets</b>	Internal/External**
<b>Dynamic Programmable Internal Fixation Target</b>	Central, Nasal, Temporal, Central-Nasal, Superior, Inferior, Superior-Temporal, Superior-Nasal, Inferior-Temporal, Inferior-Nasal

---

## Computer/Accessories

---

<b>Display</b>	Integrated 10.1" (1280 x 800) Color, Capacitive, Multi-touch
<b>Hard Drive</b>	SSD 512 GB
<b>Interfaces</b>	USB port 2.0 x 3, Gigabit Ethernet Port x 1
<b>Export / Import</b>	jpeg, pdf, DICOM**, Web API**
<b>Accessories</b>	Remote Viewer** up to a maximum of 5 remote stations

---

## Dimensions/Power supply

---

<b>Size (W x H x D)</b>	300 mm (11.8") x 450 mm (17.7") x 650 mm (25.6")
<b>Weight</b>	11 Kg (24 lbs)
<b>Rated Voltage</b>	100-240 VAC
<b>Frequency</b>	50-60Hz
<b>Power Consumption</b>	60W
<b>Electrical Class</b>	IEC 60601-1 Class I

---

\*Digital filters

\*\*Optional accessory

**REV02 - 191219**

The contents of this document may differ from the current status of approval of the product or service offering in your country. It is intended for Eye Care Professionals users only. Please contact our regional distributors for more information. Specifications are subject to change without notice for improvement, as a result of ongoing technical developments.

CE 0123

centervue



**CENTERVUE S.P.A.**

Via San Marco 9H | 35129 Padova - Italy  
Ph: +39 049 501 8399 | Fax: +39 049 501 8398  
info@centervue.com | www.centervue.com

For US market, distributed by:

**CENTERVUE INC.**

979 Corporate Way | Fremont, CA 94539 - USA  
Ph: +1 408 988 8404 | Fax: +1 408 716 3271  
infous@centervue.com | www.centervue.com

For other countries, see distributors' details  
on Centervue website

[www.centervue.com/products/drsplus](http://www.centervue.com/products/drsplus)